



Microsoft's EPM Solution Technology

Leverage Microsoft Office System 2007 technologies to provide a robust, familiar, and cost-effective enterprise platform. Whether installing the pre-integrated solution out-of-the-box, or extending the solution with integration to existing ERP, financial, HR, and/or other enterprise applications, users will enjoy such advantages as:

- Familiar Microsoft SharePoint **user interfaces** for centralized management views, analysis tools, team collaboration, document management, and workflow
- Tight **integration with Microsoft Office** personal productivity products (Outlook, Word, Excel, Visio, etc.)
- Transparent **offline** capabilities for working with projects and documents
- Seamless **Windows authentication** (users do not need another user id/password)
- Powerful, scalable, and **robust** Microsoft SQL Server database back-end and reporting & analysis tools
- **Flexible configuration** to support multiple processes and organizations that have project or portfolio management needs

In addition, the Microsoft Office System enterprise platform offers many benefits and advantages over standalone applications for IT, including:

Agile support of additional enterprise applications, while maintaining:

- High user familiarity with consistent user interfaces
- Common technology platform services and management
- Common IT support/administration skills and processes

Robustness

- Consistent feature/functionality across applications
- Flexible security models
- Reliable and scalable performance

Sustainability

- Data, application, and process integration
- Extensibility and integration with other enterprise applications
- Continuity and long-term viability



Microsoft Enterprise Project Management (EPM)

Do the Right Things Right.

To Find Out More...

To find out more about how the Microsoft EPM Solution can provide the focus, information, and tools needed to improve ROI across your organization's portfolios, contact your Microsoft account representative.



© 2007 Microsoft Corporation. All rights reserved. Microsoft, Windows, Windows Vista and other product names are or may be registered trademarks and/or trademarks in the U.S. and/or other countries. The information herein is for informational purposes only and represents the current view of Microsoft Corporation as of the date of this presentation. Because Microsoft must respond to changing market conditions, it should not be interpreted to be a commitment on the part of Microsoft, and Microsoft cannot guarantee the accuracy of any information provided after the date of this presentation. MICROSOFT MAKES NO WARRANTIES, EXPRESS, IMPLIED OR STATUTORY, AS TO THE INFORMATION IN THIS PRESENTATION.

Microsoft

Do the Right things Right.

The Microsoft Enterprise Project Management (EPM) Solution streamlines the governance and execution of portfolios of projects throughout their life cycles – from proposal to post-implementation tracking of results. By improving the decision making, communication, risk management, and productivity within management processes, the EPM Solution helps you improve quality and project success rates, reduce cycle times, and increase throughput, resulting in increased ROI across your portfolios.

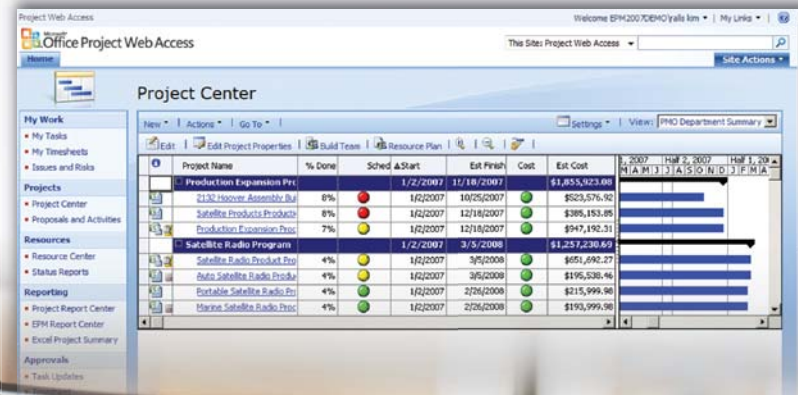
The EPM Solution provides your enterprise with interfaces that have been tailored for specific roles such as portfolio managers, stakeholders, project managers, team members, and resource managers. For each role, the application centralizes relevant views, tools, and management controls for the projects and resources across your organization.

The Microsoft EPM Solution coordinates and supports the work of these roles across four key processes in the portfolio life cycle:

- **Portfolio Optimization:** proposal, alignment, evaluation, selection, initiation, and tracking of projects
- **Resource Management:** forecasting, planning, and allocating resources
- **Team Collaboration:** communication, sharing, and collaboration within the project team
- **Project Management:** risk management and planning, coordinating, communicating, and tracking project work

Please spend a few minutes reading this brochure to learn about the specific features and benefits offered for each of these processes, as well as the usability, agility, and robustness of the application technology.

Executive Dashboard



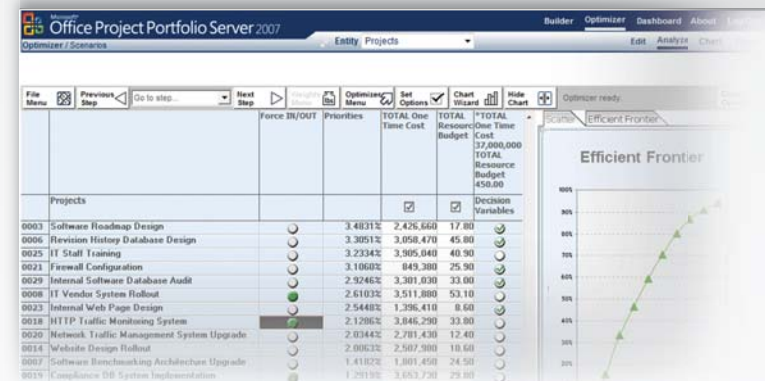
Consolidated and centralized access to the most current information on every project in your portfolio helps improve visibility and accountability across your organization. This example shows a web-based dashboard view of all active projects and their current status, organized by sponsoring department.



Portfolio Optimization

Use an integrated set of tools for managing your portfolios of projects throughout their life cycles – inception, alignment with business strategies, prioritization and selection, management of project execution, and monitoring project results.

- Use sophisticated algorithms to evaluate and prioritize projects objectively. The algorithms account for factors such as strategic alignment, financial value, budget, risk, architectural fit, and operational performance.
- Automate and enforce governance processes with flexible workflows.
- Gain timely insight throughout the project life cycle with centralized, Web-based views of the consolidated portfolio of projects.
- Track project performance, from business case to benefits realization, using centralized views.



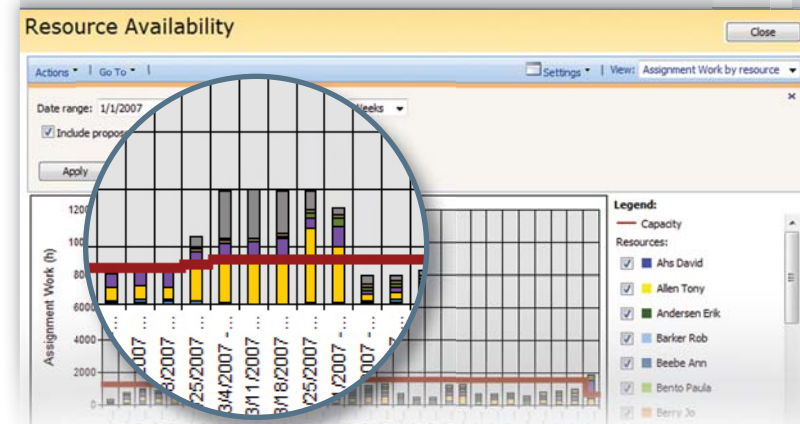
- Optimize your portfolio of project investments to maximize strategic alignment and ROI.
- Drive better risk management and portfolio decision-making.
- Improve organizational focus on results.
- More precise understanding of and control over contingencies.

The EPM Solution provides tools to help you optimize investments across your project portfolios. This example shows a selection recommendation based on a value score based on investments in prioritized business strategies, available resources, project dependencies, and mandatory projects.

Resource Management

Automatically account for work assigned to all resources, materials, and financials across all projects using a centralized resource pool. Robust Web-based reporting and analysis tools provide rich insight and forecasts of resource needs throughout the project life cycle.

- Plan, track, analyze, and forecast:
 - Costs
 - Materials
 - Resource skills, utilization, and allocation
- Streamline the allocation of resources to projects and tasks with generic resources, flexible workflow, and automatic assignment, notification, and delegation.

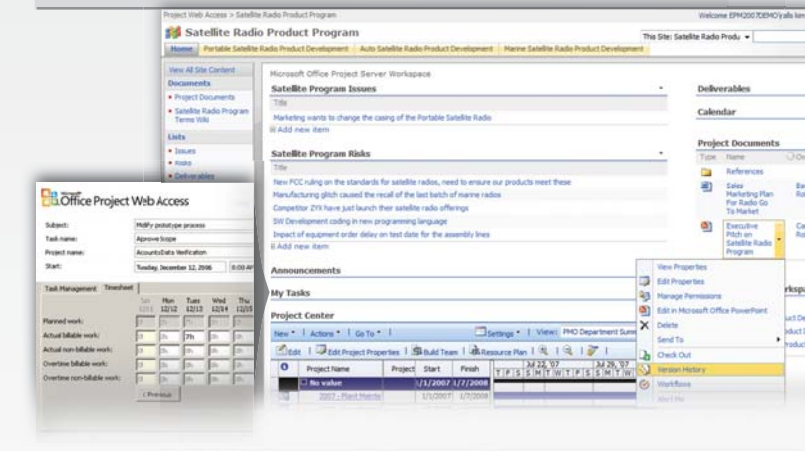


The EPM Solution consolidates and centralizes information on available resources and assigned tasks across all projects. Resource profiles can be tailored to allow analysis by roles, skills, locations, etc. This example shows a resource utilization forecast for a particular role over time, highlighting a period of significant over-allocation that will most likely cause contention for resources.

Team Collaboration

Leverage familiar team communication and collaboration capabilities to provide centralized, Web-based workspaces for each project.

- Centrally manage project artifacts and deliverables with a centralized document library featuring templates, check in/out, version control, workflow, archival, and search.
- Integrate tasks and calendars between EPM and Microsoft Outlook.
- Streamline common project work with integrated workflow automation.



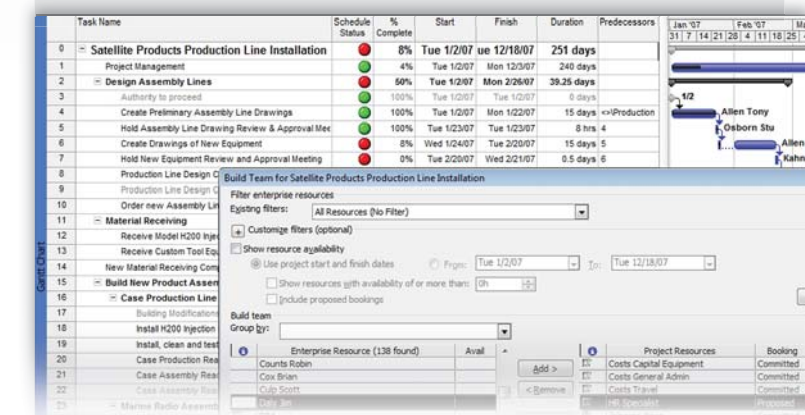
- Improve program quality and efficiency through best practices, re-use, and reduced collaboration overhead.
- Increase user productivity through automation and consistent, integrated user experiences
- Improve process compliance while reducing cycle times.

Through an automatically created, centralized Web-based project workspace for each project team the EPM Solution provides ready access to project information including: schedules, tasks & assignments, and risks & issues. Additionally, the solution uses familiar SharePoint collaboration tools such as robust document libraries, team calendars, workflows, and e-mail notifications. This example shows how project team members can access and directly update progress on their tasks from the workspace.

Project Management

Help project managers create work breakdown structures and schedule, assign, and track tasks with a Microsoft Project Professional desktop deployment.. This robust and familiar project management interface seamlessly integrates with the EPM server to provide team collaboration, resource management, and portfolio management capabilities. The EPM server transparently aggregates project information to feed dashboards and analysis tools, to provide automated notifications, and to improve work coordination.

- View, manage, and communicate current risks and issues of quality and plan variance.
- Plan, analyze, prioritize, and automatically communicate work assignments.
- Support consistent project initiation and management processes with enterprise project and artifact templates, customizable project guides, and automated workflows.



- Improve the focus and management of resources by mitigating risks and resolving issues.
- Reduce project cycle time by reducing latency between critical path tasks.
- Improve team productivity with consistent communication of work priorities.
- Enable best practices and continual improvement of project management processes.

The EPM Solution enhances Microsoft Project on the desktop and provides a centralized view of resource profiles and availability, allowing the project manager to work with enterprise information, such as project, task, and resource attributes. This example shows the work breakdown structure (Gantt view) for a project, with a window open for assigning project resources.